

ScryQuickStartGuide

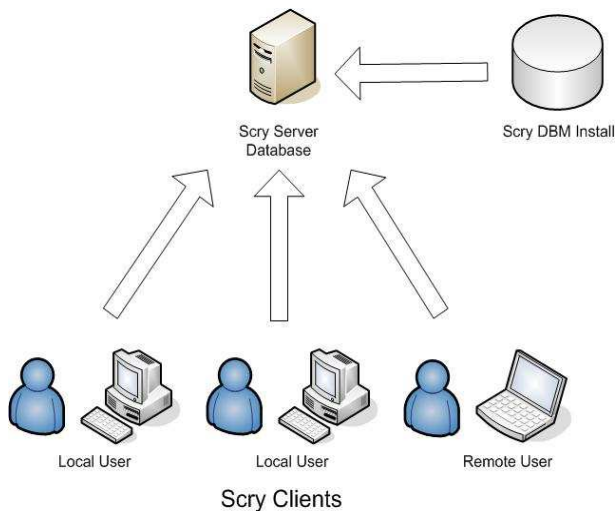


Scry is a desktop In-and-Outboard manager with an integrated messaging facility to help track the activity of employees in your organization. Scry tells you where your colleagues are, without you having to leave your desk and its IP connectivity over the LAN ensures you know the status of home workers or users in remote offices too. Select from a list of predefined statuses including 'Available', 'Away from desk' or 'In a meeting' or create your own specific to your organization. Scry even detects when your workstation is idle or locked and updates your status accordingly!

- Full Microsoft Windows XP look and feel
- Integrated messaging and message notification
- Firebird SQL database backend for stability and reliability
- Supports upload of thumbnail images to identify users
- Customizable statuses and status icons
- Group and tracked user facilities
- Full reporting with the export facility for user status, log on and messaging
- Administrator, Manager and User definable permissions.

Scry saves money by eliminating the endless trips to colleague desks only to find that they are not available. With its status and messaging capabilities, Scry adds efficiency to the networked office and allows employees to be more effective at work. This guide has been created as a 'Quick Start Guide' to the world of Scry. For further information please read the individual installation guides or if you get completely stuck you can contact our support team at the following location: support@mhssoftware.co.uk

How do I Configure Scry?



Scry is made of three main components: The Scry server (Firebird SQL), The Scry database manager (DBM which creates and maintains the database) and the Scry Client. All components have separate installers for ease of installation. You will only need to install the Firebird Server and Scry DBM once.

Scry is configured by first installing the Firebird SQL server. The Firebird SQL server should be installed on a network server machine, which each of the Scry clients will have IP access to. You should also consider whether you want to back up the database at a future date, as this may influence where you install it.

The Firebird SQL server is quick to install. A simple set-up programme will guide you through the installation to complete the installation. Once the Firebird SQL server is installed you will need to install the Scry database Manager (Scry DBM). Scry DBM "instructs" the Firebird SQL server to initially create a database for the Scry clients.

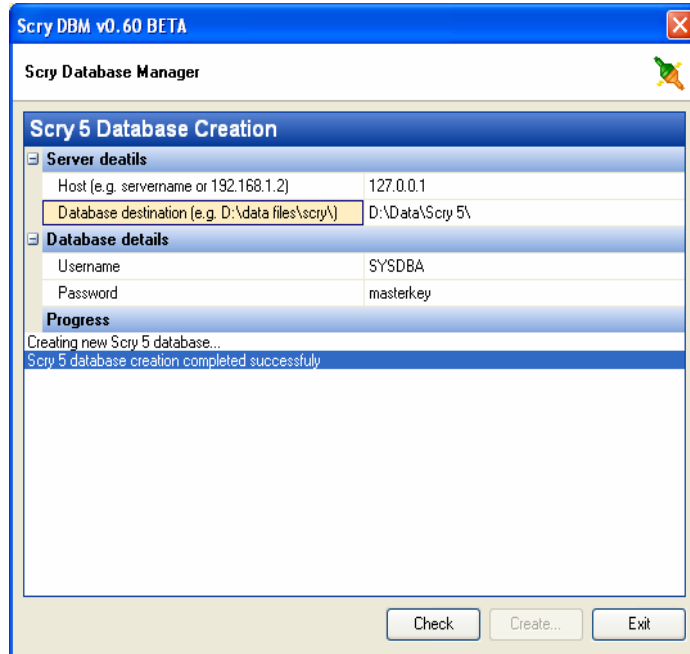
Installing the ScryDBM

To install the ScryDBM you will need to run the Scry DBM installer. Follow the installer clicking next to progress the installation. To complete the set-up you will be prompted to add some information regarding your configuration.

Host—Enter the server name or IP address of the machine where you installed the Firebird SQL Server.

Database destination - Here you should enter the folder location of where you would like the Scry Database files to be held, relative to the actual server that you installed the Firebird SQL server.

Here you can also specify the Firebird SQL server administrator username and password.



NOTE: The database destination folder must already exist. This can be verified by using the 'Check' button prior to creating the ScryDBM

Installing the ScryClient



You can either install the Scry client by either a shared "exe" on a network drive, or by installing it locally on each client machine, which would almost certainly be used for laptop installations. Double click the installer on the client machine and clicking 'next' to accept the default options. You will need to enter the location of the Firebird SQL server in the 'Host' field. The port location should be kept as default for most users. The 'database location' is the physical location of the database files (relative to the server that you install Firebird SQL server on).

Here you can also configure the Database Username and Password if you wish.

When running Scry for the first time, the user is given a Scry in a way that works for them. Note that the first Scry you have chosen Windows logon authentication then the user as authentication, without requiring a password on the already been authenticated by Windows. If the "Scry" authentication will prompt for a valid username and password, the database if the username was not found in the database will now be logged into the Scry Main Users screen!

number of options to help them configure Scry Client User will be the administrator. If the user's Windows logon name will be used on basis that Scry assumes that they have authentication method has been selected, and offer to automatically add the user to the database. Your client is now configured and you